

Jiangsu Baidai Energy-Saving Building Materials Co.,Ltd

**MCM FLEXIBLE STONE WALL DECORATION MATERIAL**



# What is Flexible Stone(MCM)?

**Flexible Stone,also known as Flexible Tiles or Soft Tile.**

Its academic name is "Modified Inorganic Powder Composite Material (Modified Clay Material)"

**Building exterior wall decoration material**

Product introduction

**Project Regular-use Series is fully**

upgraded from texture, color and pattern. The exquisite patterns and textures are original and rough, profound and thought-provoking. It has the advantages of large size, light weight, flexible and bendable, convenient installing and low cost, and can be used interior and exterior.

***Safe and environmentally friendly***

## 马赛克洞石 Travertine Mosaic

常备规格/Regular size: 1180\*3000mm

厚度/Thickness: 5mm-6mm

不限于以下颜色

Not limited to the following colors



msk001



msk002



msk003





## 水泥浇筑板 Concrete Board

常备规格/Regular size: 600\*1200mm  
厚度/Thickness: 4mm

不限于以下颜色  
Not limited to the following colors



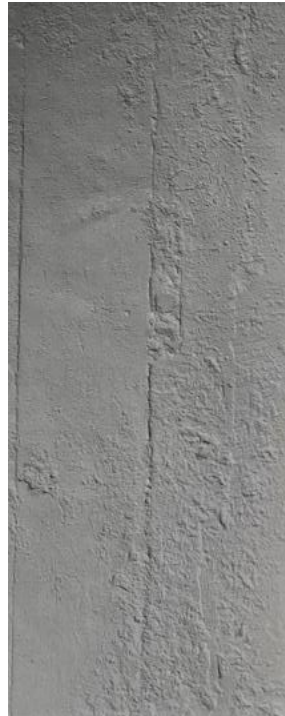
snjzb001



snjzb002

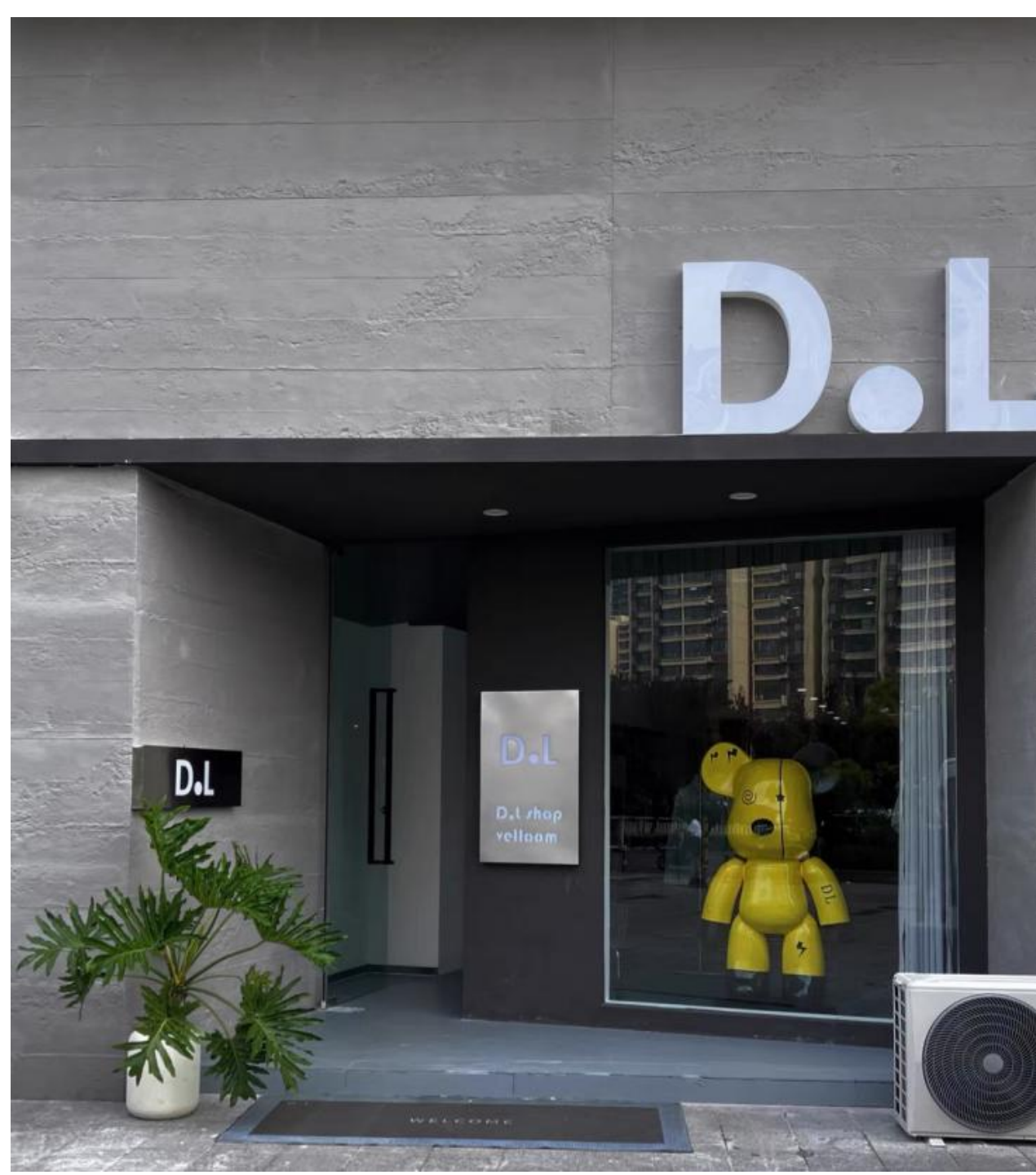


snjzb003



snjzb004





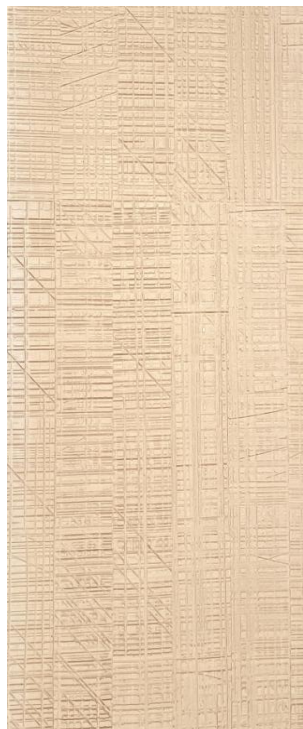
## 锯木纹 Sawing wood

常备规格/Regular size: 600\*3000mm、1200\*3000mm  
厚度/Thickness: 3-4mm

不限于以下颜色  
Not limited to the following colors



jmw001



jmw002

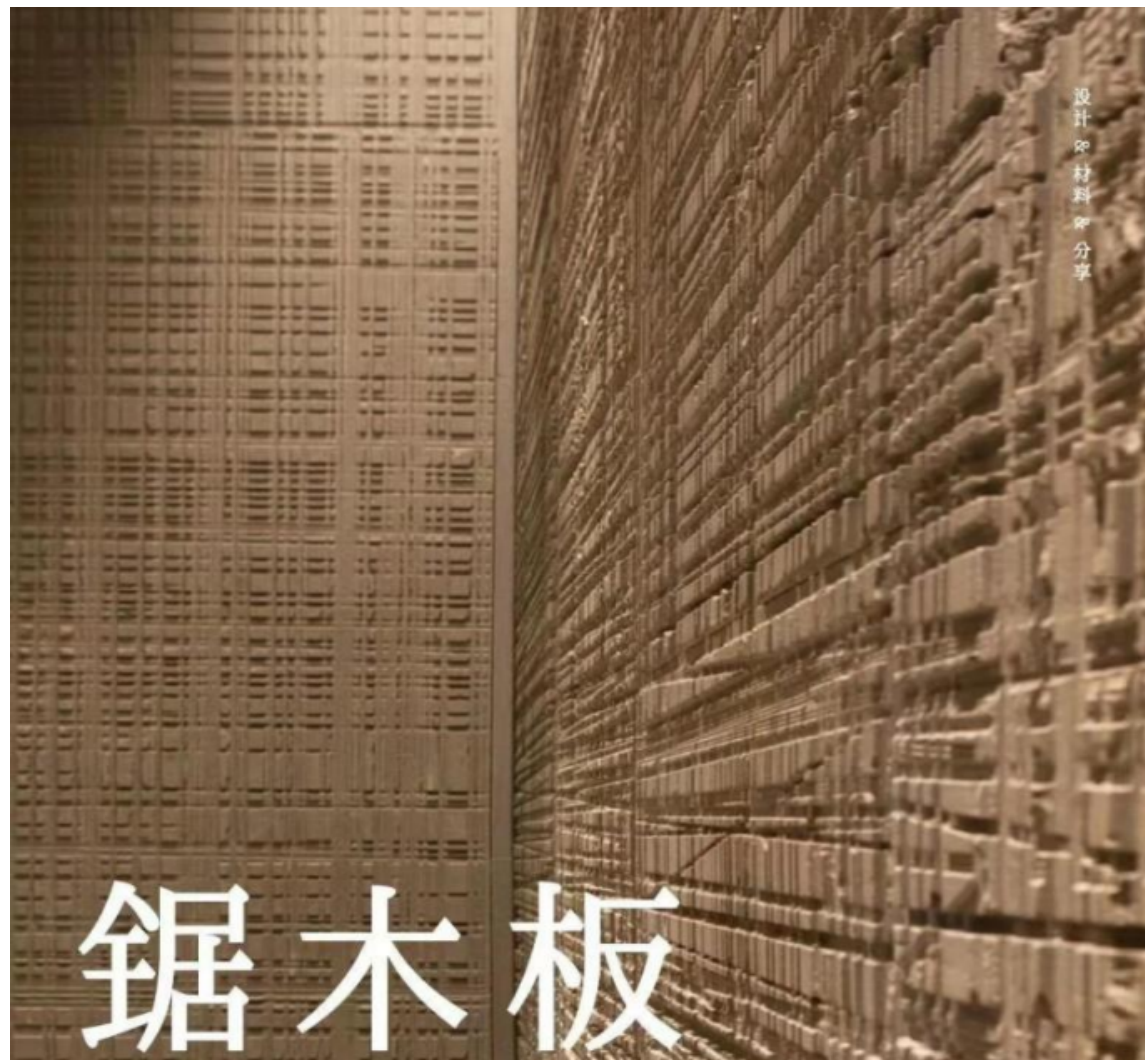


jmw003



jmw004





設計材料分享

# 鋸木板

## 星月石 Starmoon Stone

常备规格/Regular size: 300\*600mm、600\*1200mm  
厚度/Thickness: 3-4mm

不限于以下颜色  
Not limited to the following colors



xys001



xys002



xys003



xys004





## 脉络石 Round Line Stone

常备规格/Regular size: 600\*1200mm、1200\*2400mm、1200\*3000mm

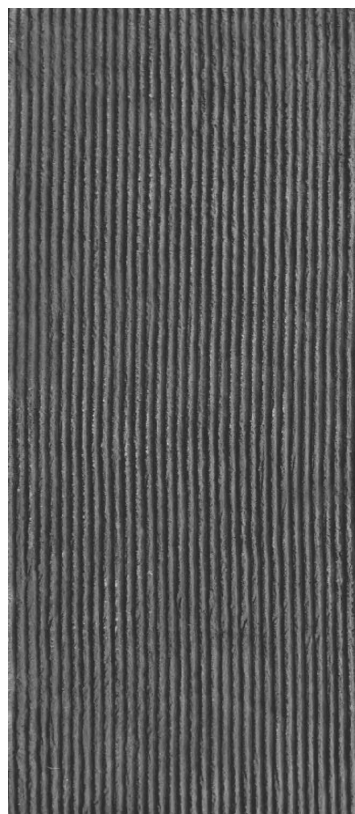
厚度/Thickness: 4-6mm

不限于以下颜色

Not limited to the following colors



mls001



mls002



mls003





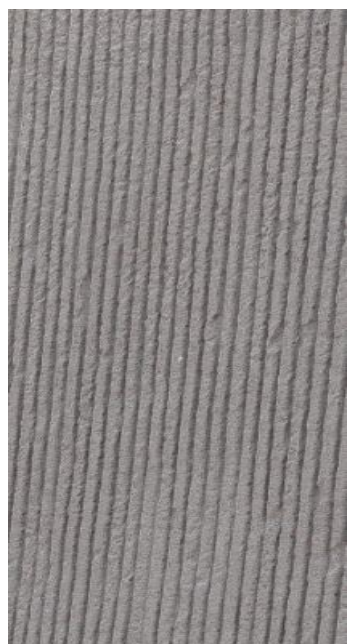
## 阡陌石 Square Line Stone

常备规格/Regular size: 600\*1200mm、1200\*2400mm , 1200\*3000mm  
厚度/Thickness: 3-5mm

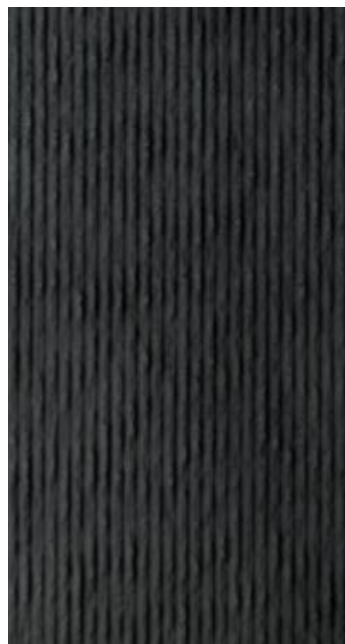
不限于以下颜色  
Not limited to the following colors



qms001



qms002



qms003





## 断层石Line Stone Board

常备规格/Regular size: 300\*600mm、600\*1200mm、1200\*2400mm  
厚度/Thickness: 3-5mm

不限于以下颜色  
Not limited to the following colors



dcs001

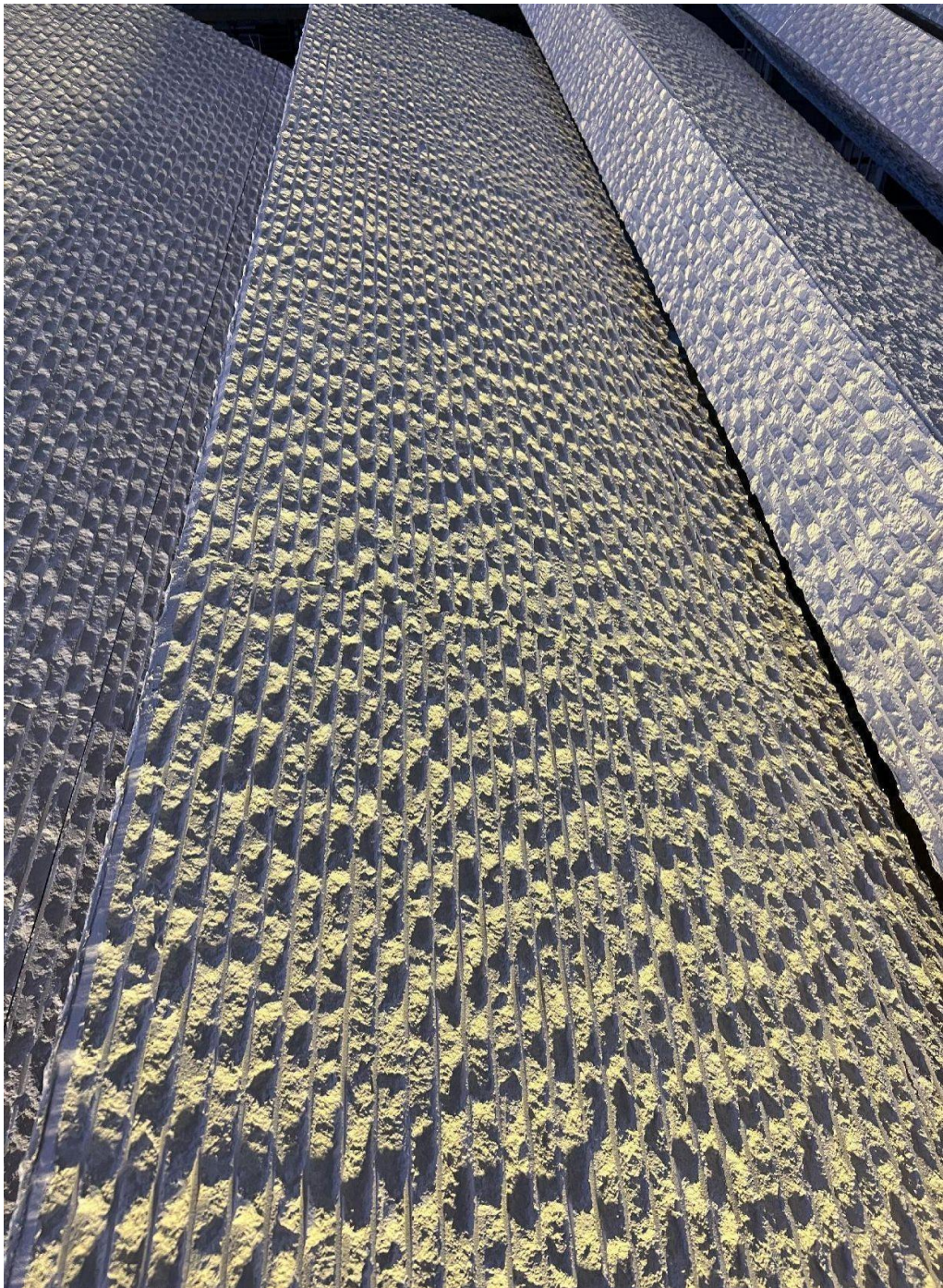


dcs002



dcs003





## 毛面花岗岩 Rough Granite

常备规格/Regular size: 280\*580mm、580\*1190mm  
厚度/Thickness: 3-5mm

不限于以下颜色  
Not limited to the following colors



mmhgy001



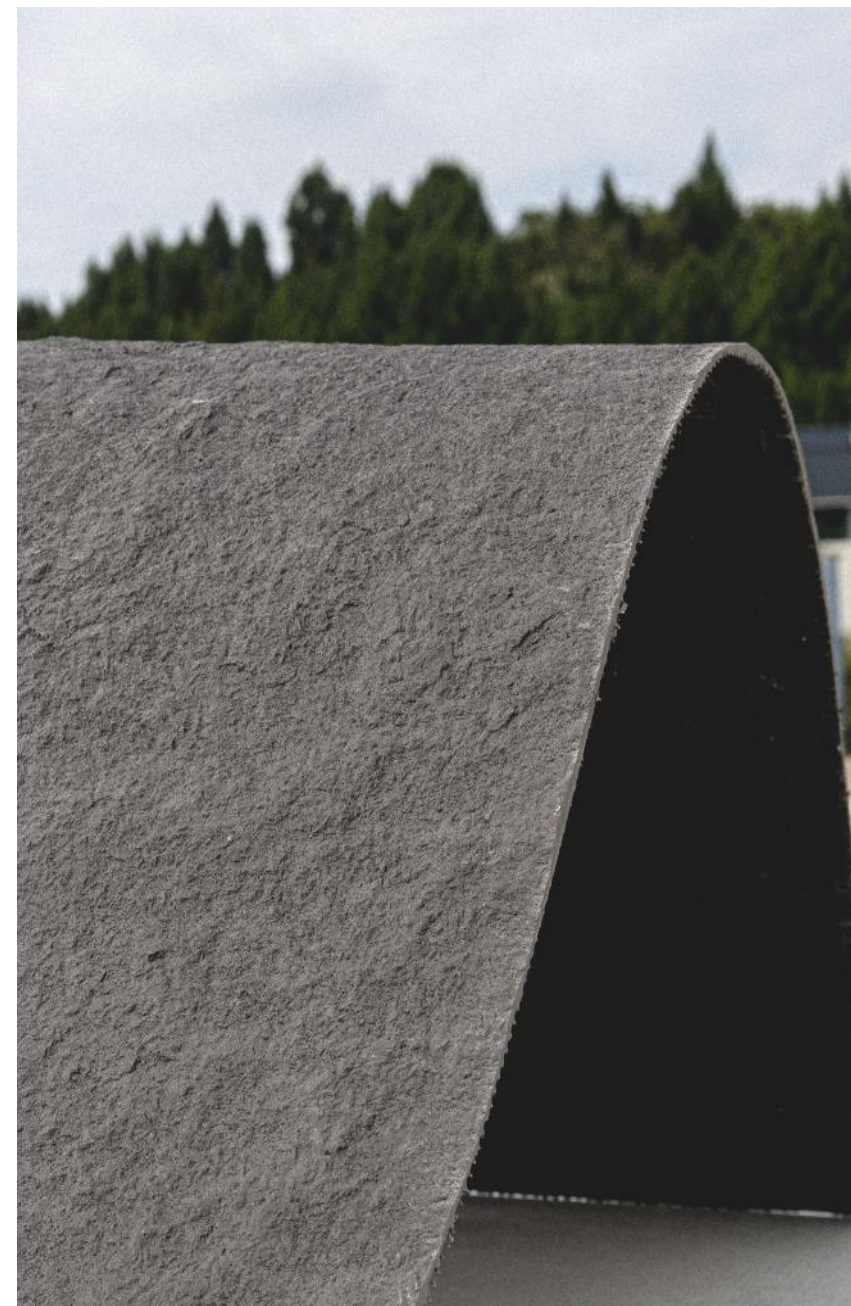
mmhgy002



mmhgy003



mmhgy004





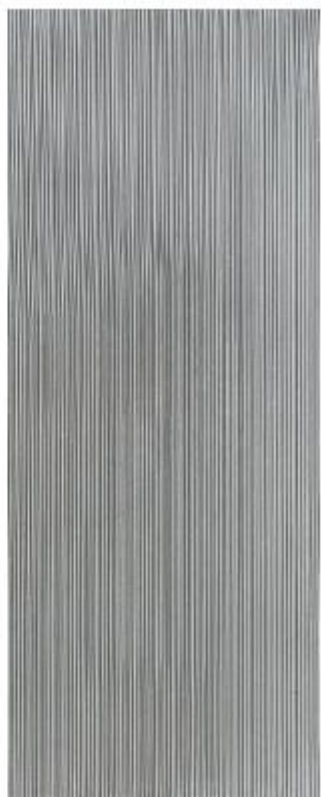
## 新线石 Fine Line Stone Board

常备规格/Regular size: 300\*600mm、600\*1200mm、1200\*2360mm  
厚度/Thickness: 3mm

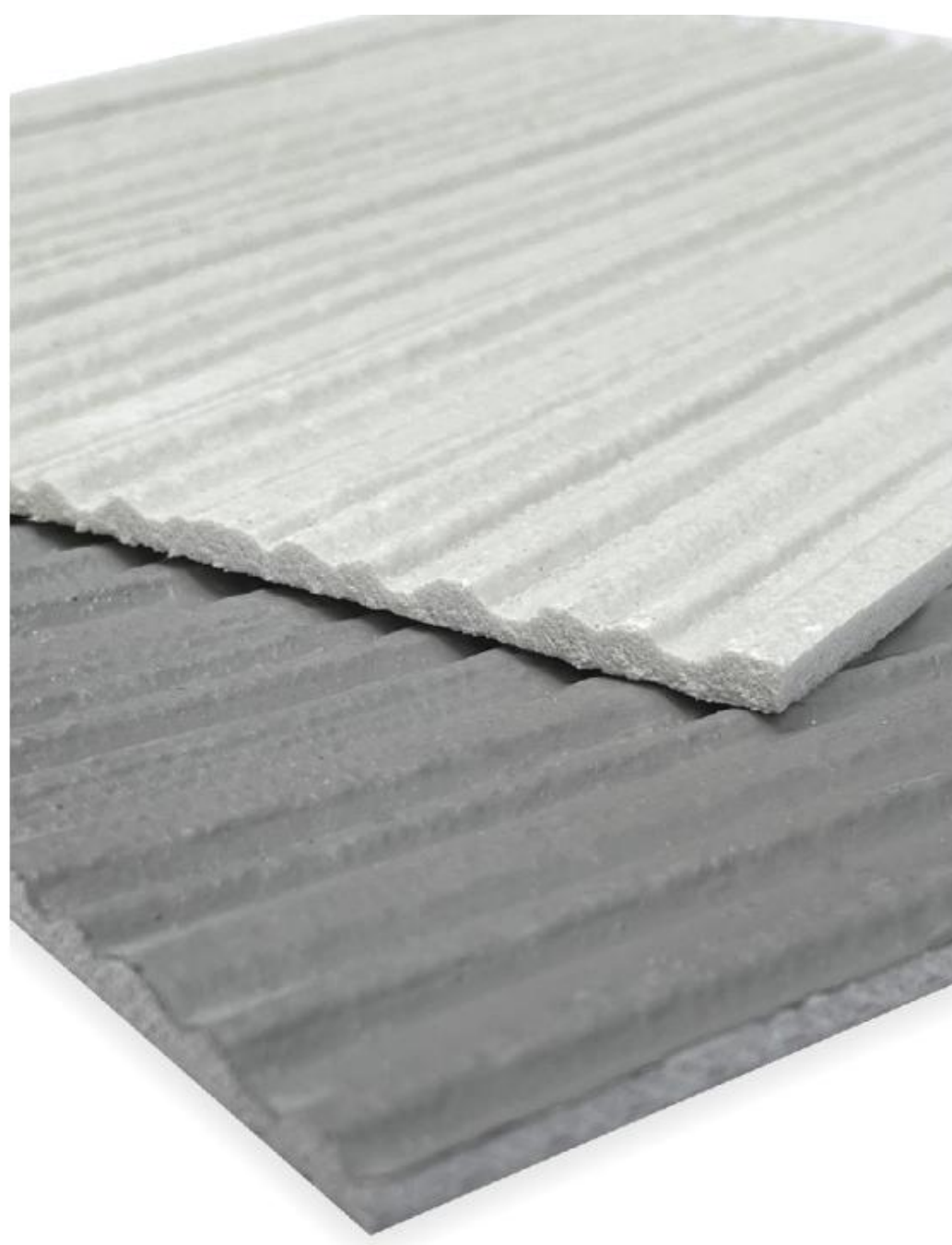
不限于以下颜色  
Not limited to the following colors

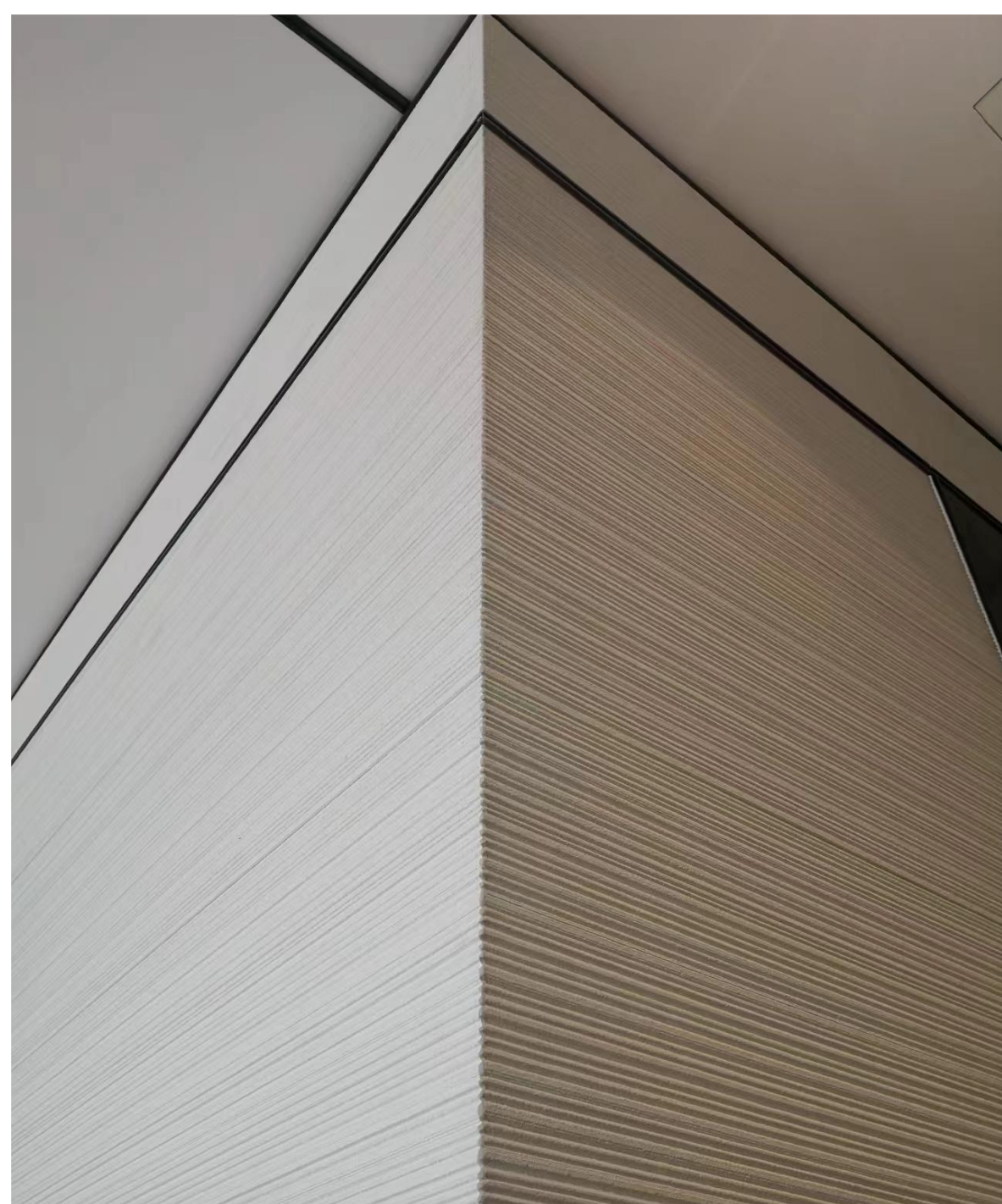


xxs001



xxs002





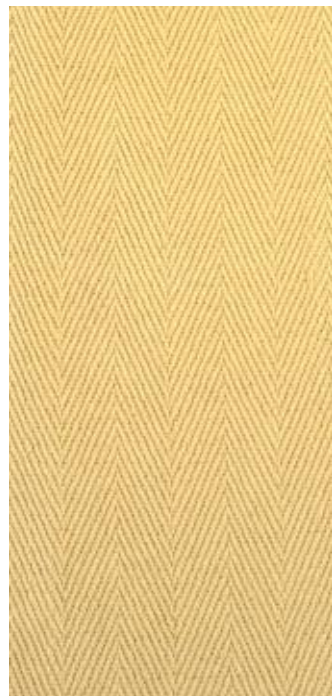
## 麻编 Weaving

常备规格/Regular size: 300\*600mm、600\*1200mm、1180\*2400mm  
厚度/Thickness: 3-5mm

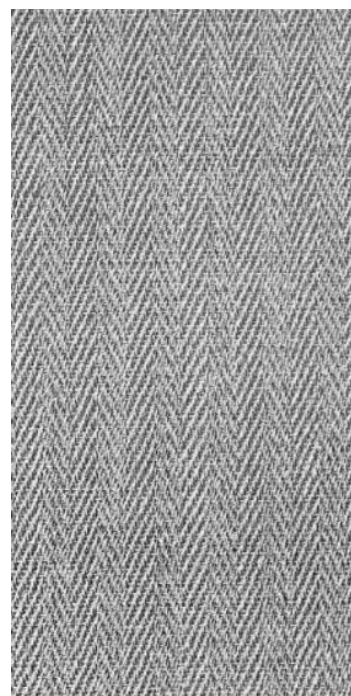
不限于以下颜色  
Not limited to the following colors



mb001

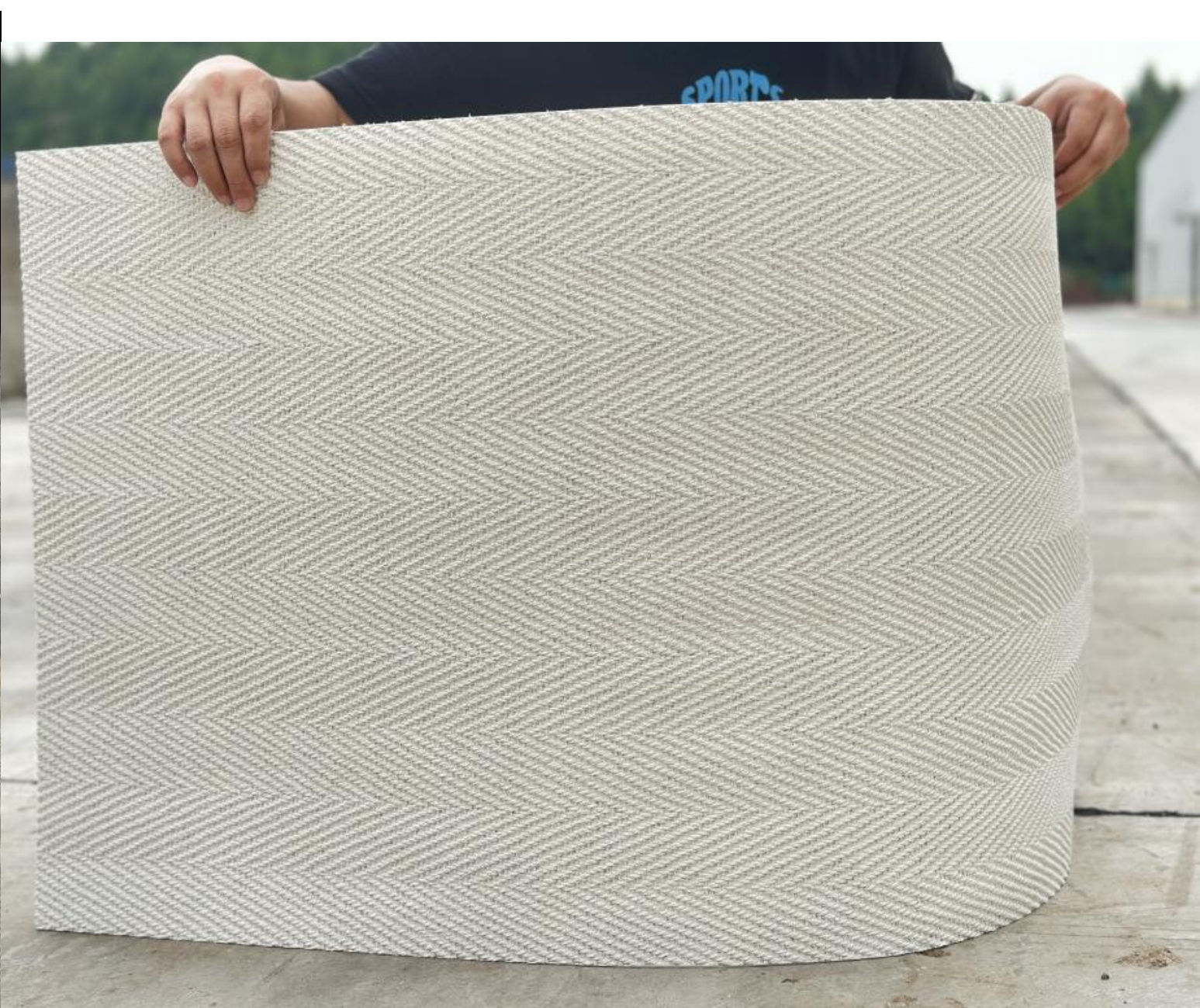


mb002



mb003





## 水波纹板 Ripple Board

常备规格/Regular size: 600\*1200mm、1200\*2400mm

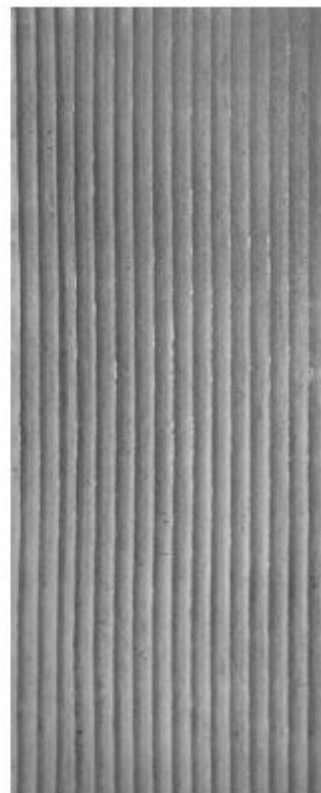
厚度/Thickness: 2-4mm

不限于以下颜色

Not limited to the following colors



sbw001



sbw002





## 洞石 Travertine

常备规格/Regular size: 300\*600mm、600\*1200mm、1200\*2400mm  
厚度/Thickness: 3-4mm

不限于以下颜色  
Not limited to the following colors



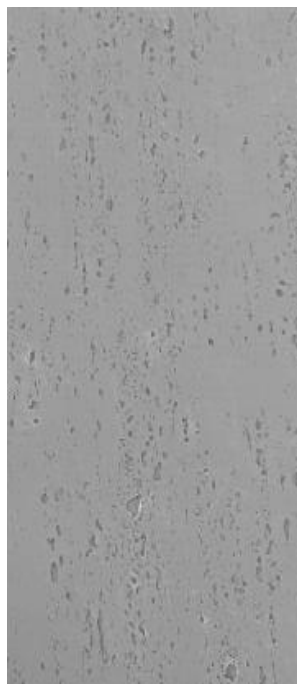
ds001



ds002



ds003



ds004



ds005



ds006



ds007



ds008



## 夯土板 Rammed Earth Board

常备规格/Regular size:600\*1200mm、900\*2700mm、1200\*3000mm

厚度/Thickness: 3-4mm

不限于以下颜色

Not limited to the following colors



htb001



htb002



htb003



htb004

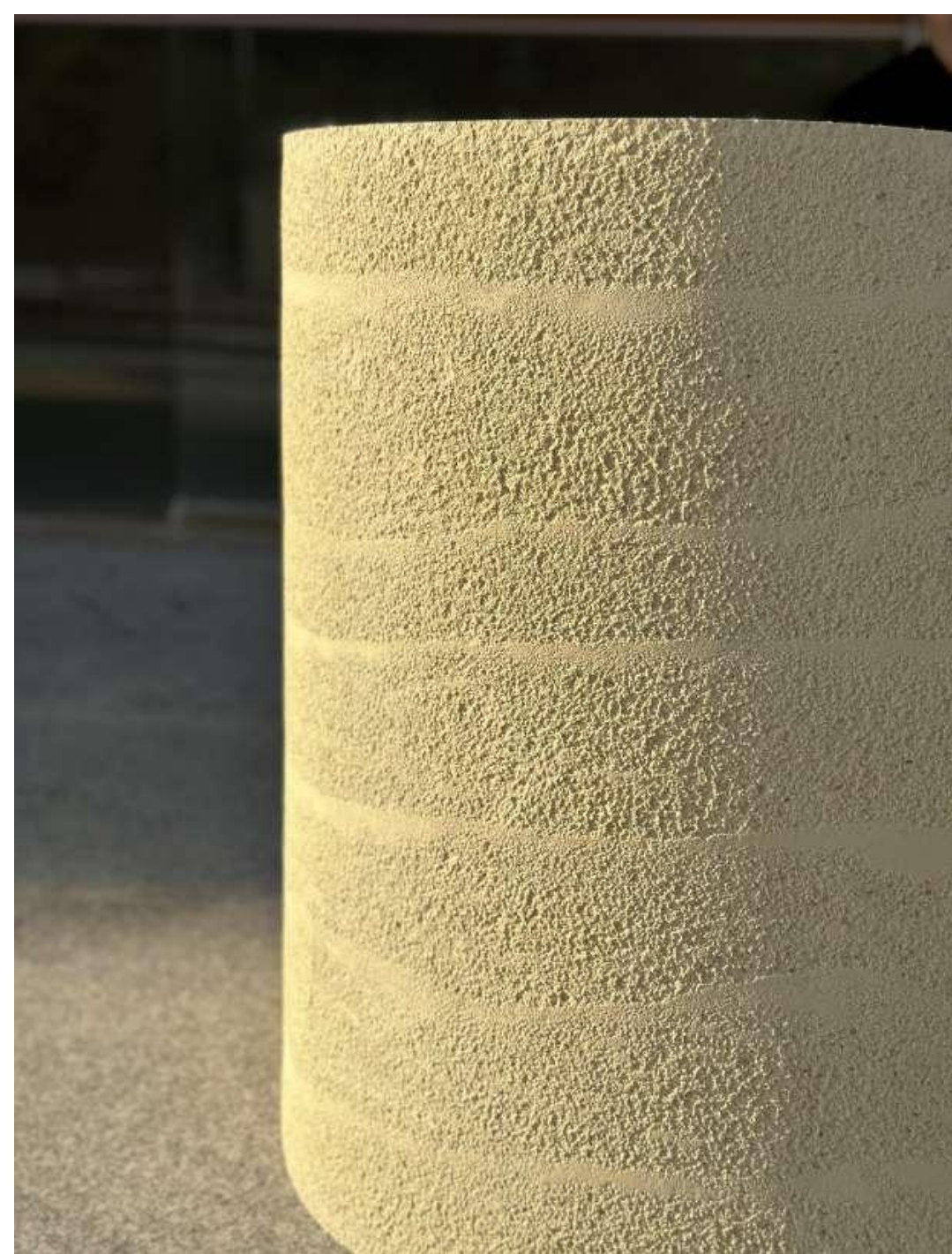


htb005



htb006





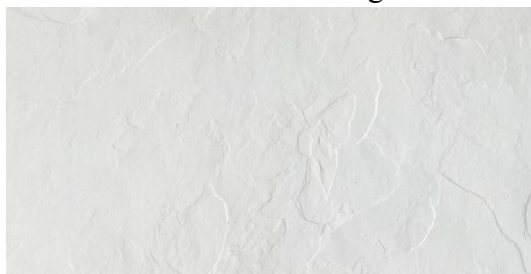
## 板岩 Slate

常备规格/Regular size:297\*597mm、597\*1190mm

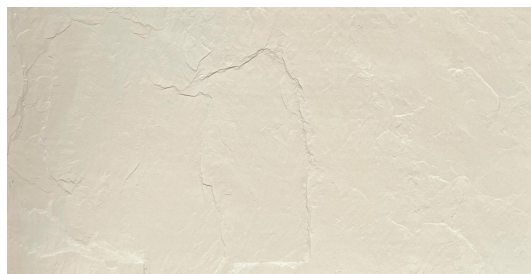
厚度/Thickness: 3-4mm

不限于以下颜色

Not limited to the following colors



by001



by004



by002



by005



by003



by006





*Is born with natural color, elegant and rich, and is ideal for urban color planning.*



## 布纹石 Cut Stone

常备规格/Regular size:350\*585mm、585\*1170mm  
厚度/Thickness: 3-4mm

不限于以下颜色  
Not limited to the following colors



bws001



bws002



bws003



bws004





*Good flexibility  
and light weight*



## 塞班岁月 Muretto Stone

常备规格/Regular size:290\*600mm、575\*  
1190mm 厚度/Thickness: 3-9mm

不限于以下颜色

Not limited to the following colors



sbsy001



sbsy002



sbsy003





*Good flexibility and light weight*

*Is born with natural color, elegant and rich, and is ideal for urban color planning.*



## 陶土砖 Facing brick

常备规格/Regular size: 235\*60mm

厚度/Thickness: 2.5-3.5mm

不限于以下颜色

Not limited to the following colors



A039



A040



A041



A042

灰色系/Gray Series



A046



A047



A048



A049

红色系/Red Series



A024



A025

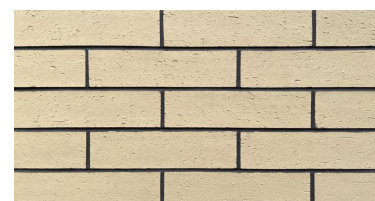
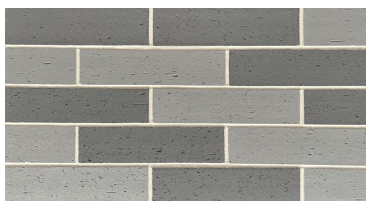


A026



A027

黄色系/Yellow Series



*Derived from Artemis, the goddess of the moon in Greek mythology, with a goddess like soft light color scheme that filters out the rough texture of the brick pattern.*



## 松木纹 Imitation Wood

常备规格/Regular size:100\*1190mm、150\*  
1190mm 厚度/Thickness: 2.5-3.5mm

不限于以下颜色

Not limited to the following colors




smw001



smw002





*Is born with natural color, elegant  
and rich, and is ideal for urban  
color planning.*

源于自然 臻于艺术

MASTER OF ARCHITECTURE AND FASHION

Master of Green  
Architecture Fashion Art

# Flexible Stone ( MCM)

It is an environmentally friendly building decoration material formed by the hybridization of environmentally friendly active clay and environmentally friendly polymer.



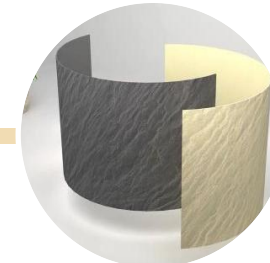
**Raw materials:** Various inorganic powders such as ecological white soil (stone), red soil (stone), loess (stone), black soil (stone), purple soil (stone), etc., collected from far away cities and subjected to strict technical testing.

**Modification:** After the raw materials are fully crushed, the inorganic compound surface is coated with organic activity through spray and other methods. The molecular chain of natural soil is extended by more than 30 rational technologies such as nanotechnology and gamma ray to compound and modify it, making it a material with new performance, which has both the durability of inorganic materials and the plasticity of organic materials.

**Forming:** Based on various natural material textures or historical handicraft elements, modern art creation elements, etc., using cutting-edge photosensitive mold cloning technology to create, under photochemical isomerism and controlled curve temperature, any shape can be formed.

# Flexible Stone (MCM) productive process

1PC = 30PCS



Raw material  
collection

Mechanical  
treatment

Modification

Produce

Performance  
tuning

Forming

Collect inorganic compound such as soil and stone powder from nature

Color separation and pulverization of inorganic compound to form microscopic inorganic powder

Surface coating modification of particles using fluorinated surfactants to form environmentally friendly active soil

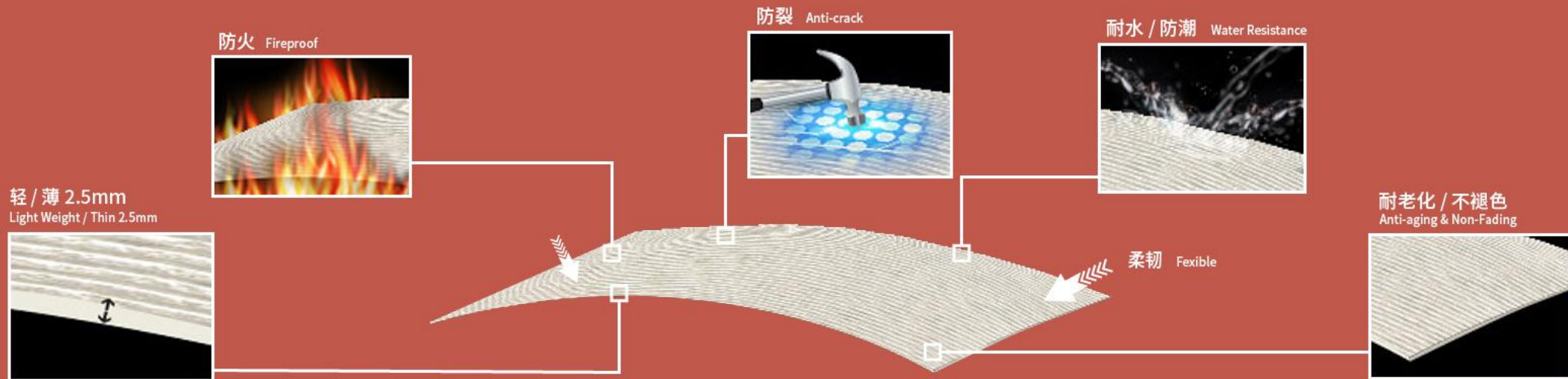
Adopting self-developed fully automated production line modeling

The flexibility and hardness of the finished product are adjusted through curve temperature and modifiers

Forming sheets, rolls, blocks, plates or profiles

# Features

- 1. Thin and light:** Each piece has a thickness of only 2-6mm and weighs only 3-8 kilograms/square meter. It is easy to install and has high safety, making it suitable for high-rise buildings.
- 2. Soft, earthquake resistant and crack resistant:** can be directly curved, with good ductility, earthquake resistant and crack resistant. Suitable for irregular buildings.
- 3. Anti fouling and self-cleaning:** special nano glazed surface, self cleaning technology with net load.
- 4. A-level fire protection:** A-level fire resistant material.
- 5. Anti freezing and thawing, acid and alkali resistance, durability, and non fading:** The freeze-thaw test has been conducted 100 times, and the accelerated aging test has been conducted for over 4000h. The surface is free from powdering, cracks, peeling, and discoloration, equivalent to outdoor use for more than 50 years.
- 6. Safety:** Allow the building to breathe freely and not fall.



# Product Features Excellent Performance

Performance Comparison	Stone	Ceramic tile	Paint	Aluminum Composite Panel	Terracotta panels	Flexible Stone
<b>Durability</b>	Durable	Durable for 20 years without discoloration	easy to fade	Ordinary	Durable for 20 years without discoloration	<b>Durable, no Chalking or discoloration over 50 years</b>
<b>Environmentally</b>	Not environmentally friendly, deforestation	Not environmentally friendly. The production process emits a large amount of carbon dioxide and waste residue	Not environmentally friendly Pollution emissions during the production process	Not environmentally friendly Pollution emissions during the production process	Not environmentally friendly High temperature sintering is required, and a large amount of exhaust gas needs to be discharged	<b>Very environmentally friendly. There is no discharge of "three wastes" during the production process. National three-star green building materials</b>
<b>Fire performance</b>	-	Fireproof	-	Not fireproof	Fireproof	A-grade fireproof
<b>Safety</b>	Unsafe	There are safety hazards	safety	There are safety hazards	There are safety hazards	<b>Safe, light and soft, earthquake resistant and crack resistant</b>
<b>Convenience</b>	Inconvenient construction	Inconvenient construction	Very convenient and fast	Inconvenient construction	Inconvenient construction	<b>Very convenient and fast</b>
<b>Expressive</b>	Only stone products	Limited expressive	Limited expressive	Limited expressive	Single color and variety	<b>The expressive power is very rich. Imitation of stone, wood, leather, and metal can be achieved.</b>
<b>Cost performance</b>	Expensive, superior stone, market value more than 100 dollars/square	Cheap	Cheap	Expensive	High comprehensive cost	<b>High cost-effectiveness, easy construction, logistics savings, short construction period, and labor saving</b>

## Analysis of Similar Products

Category	Technical Principles	Quality	Features
<b>Flexible Stone(MCM)</b>	<b>Inorganic powder modification technology, made by hybridization of environmentally friendly active soil and environmentally friendly polymer</b>	<b>superior</b>	<b>It combines the durability of inorganic materials with the plasticity of organic materials. Beautiful, environmentally friendly, durable (aging resistance test over 3500 hours), A-grade fireproof.</b>
Non active powder flexible stone	Made by mixing fine sand/calcium carbonate and propylene lotion	inferior	Applied to exterior walls, it is prone to cracking and discoloration, and its lifespan is similar to that of ordinary coatings; There is a 10 times difference in service life compared to MCMFlexible Stone.
Flexible Stone coating	Material and process of genuine stone paint	inferior	Easily chalking and discoloring. Generally, artificial aging and weather resistance experiments are less than 2000 hours, which is not environmentally friendly.
Cement Flexible Stone	Synthesized with cement and waterproofing agent	inferior	Applied to exterior walls, it will turn alkaline under the action of rainwater, making the building dull and greatly reducing its aesthetics.